

## Temperature & Humidity Sensor

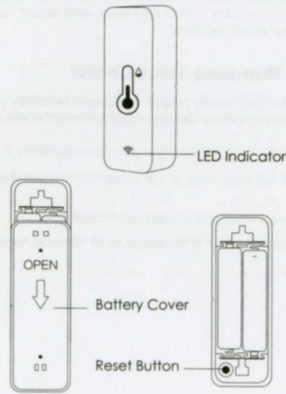
### USER MANUAL



Model: TH01

-1-

## Product Presentation:



-2-

## Specification

Size: 71\*25\*20mm  
 Battery: LR03-1.5V/AAA\*2 (Alkaline battery)  
 Wi-Fi Protocol: 2.4GHz  
 Wi-Fi Standard: IEEE 802.11 b/g/n  
 Temperature Measure Range: -20°C ~ 60°C  
 Temperature Accuracy: ±1°C  
 Humidity Measure Range: 0% RH~100% RH  
 Humidity Accuracy: ±5% RH

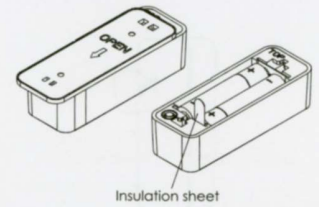
### Checklist before using the device:

- Your smartphone has connected to a 2.4GHz Wi-Fi network.
- You have input the correct Wi-Fi password.
- Your smartphone must be Android 4.4 + or iOS 8.0 +.
- If the numbers of devices connected to Wi-Fi router reach the limit, you can try to disable a device to vacate the channel or try with another Wi-Fi router.

-3-

## How to use:

Slide downwards to open the back cover of battery compartment, take out the insulation sheet, the indicator will blink.



Insulation sheet

(Notes: when batteries are run out, please choose Alkaline battery instead of Carbon-zinc battery.)

-4-

### How to set up:

1. Use your smartphone to scan QR code, or search "Smart Life" app in Google Play Store or APP Store to download and install.



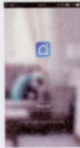
Smart Life



QR Code

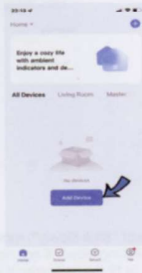


2. Create an account with your mobile number and authentication code.



-5-

3. Connect your mobile to your Wi-Fi router, click "+" at the upper right corner of homepage or click "Add Device"



-6-

### 4. 1) Bluetooth Mode:

The app will advise you to turn on the bluetooth on your mobile, it will search the device and add automatically.



-7-



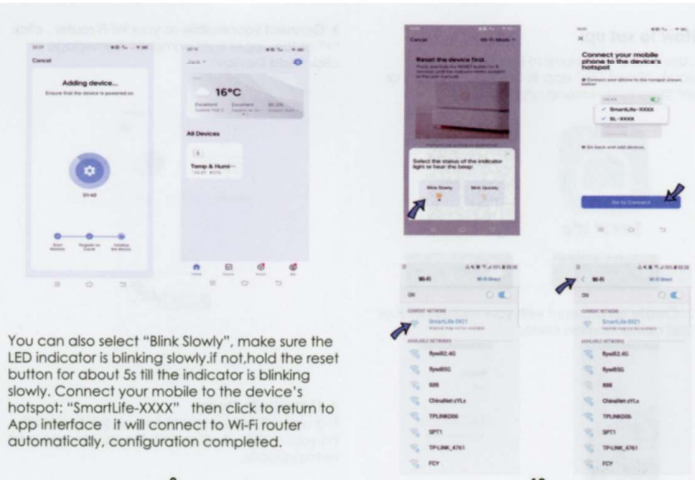
Come App si può utilizzare sia Smart Life che Tuya mantenere attivati sia Bluetooth che Wi-Fi

### 2) Wi-Fi Mode:

Select "Temperature and Humidity Sensor (BLE+Wi-Fi)" from "Sensors". Select "Blink Quickly", make sure the LED light is blinking quickly, if not, hold the reset button about 5s till indicator is blinking fast.



-8-



-9-

You can also select "Blink Slowly", make sure the LED indicator is blinking slowly, if not, hold the reset button for about 5s till the indicator is blinking slowly. Connect your mobile to the device's hotspot: "SmartLife-XXXX" then click to return to App interface it will connect to Wi-Fi router automatically, configuration completed.

-10-

5. Use a clean and dry towel to clean the area where you want to mount the sensor. Peel off the adhesive tape to stick on the back of sensor, press it hard to fix it well.

(The adhesive tape is for one-time use only.)



### NOTES:

The sensor is only used in indoor and not water-proof.

-11-

## Functions

### 1. Accurate Measurement

About 30 minutes after wifi configuration, the temperature and humidity is closer to the actual ambient environment, so the readings are more accurate. And please keep the sensor away from any heat sources.

### 2. Intelligent Linkage

You can create linkage scene with other Tuya smart devices like Smart IR Remote Controller. For example, when the indoor temperature > 30°C, Air conditioner will turn on automatically, or when the humidity is < 20%, the humidifier will spray.

### 3. Temp & humidity Alert

You can preset the range of temperature and humidity in the "Scene", when the temperature and humidity reaches the range, it will push alert message via app

### 4. Temperature Unit Switch

You can switch temperature unit between Celsius and Fahrenheit in the Set, select the temperature unit, then press the reset button once, the switch completed.

-12-

### 5. Temp and humidity records

You can view the historic data of temperature and humidity stored for 1 year, and export to your email address.

### 6. Third-party Voice Control

You can enquiry about temp and humidity via Amazon alexa, Google assistant smart speaker.

OK Google, what is the <device> humidity?  
 OK Google, what is the <device> temperature?

Alexa, what is the <device> humidity?

Alexa, what is the temperature of <device name>?

-13-

## FAQ

- Please use new alkaline battery, don't mix use with used battery.
- Please configure network connection instantly after the batteries are installed, to avoid power consumption.
- Please make sure your wifi network works well, if the network is not good, the device will always try to connect wifi, then battery will run out soon.
- Since it is a low battery-powered device, if there is no information reported within 24 hours, the app will remind you that it is offline.
- When the ambient temperature change > 0.5°C, or the humidity > 5%, the temp and humidity will be updated every 2 minutes.
- When the ambient temperature change < 0.5°C or the humidity change < 5%, the temperature and humidity will be updated once an hour.

-14-